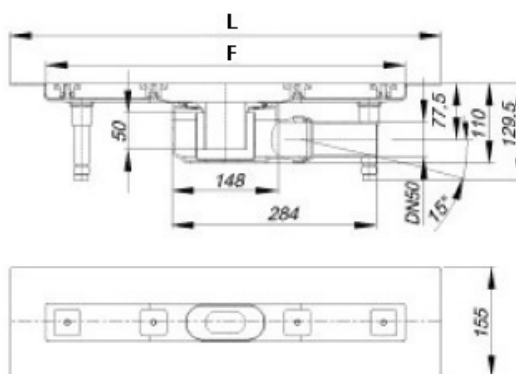


05. July 2010



channel drain CeraLine



Text for invitation to tender

DALLMER channel drain CeraLine conforming to DIN EN 1253 (approval)
 Linear drainage for casting in
 outlet: DN 50 ball-joint adjustable
 0 - 15 °
 with: sound absorbing height adjustable levelling legs,
 integral sand coated flange for secure bonding of under-tile waterproofings, drain body with removable trap insert, height adjustable screws, temporary blanking plate, tiling gauge
 Material channel: 304 stainless steel
 Material trap: polypropylene
 Flow rate tested to DIN EN 1253
 0.8 l/s

Ref.	L(mm)	F(mm)
520012	600	500
520029	700	600
520036	800	700
520043	900	800
520050	1000	900
520067	1100	1000
520081	1200	1100
520074	1300	1200